



FOR YOUTH DEVELOPMENT®
FOR HEALTHY LIVING
FOR SOCIAL RESPONSIBILITY



BUILDING WHAT MATTERS

Capital Campaign Case for Support
WENATCHEE VALLEY YMCA





» IT'S TIME

The Wenatchee Valley YMCA opened its doors over 113 years ago, and while our mission remains the same, our services have changed to allow us to remain relevant and sustainable into the next century. The YMCA is focused on prevention and wellness through youth development, healthy living and social responsibility. We know that when people participate in developmental, civic, social, athletic and recreational programs, we then strengthen the foundation of our community.

Today, the Y has adapted and evolved, and is so much more. We are a leader in Youth Development through licensed childcare, early learning, camping, teen outreach, swim safety, mentoring, and more. We are only scratching the surface of the potential we have to address needs in our community.

» THE NEED

The building that has served the community so well for so many years, is grossly inadequate to meet current and future needs. The building is dysfunctional for today's safety standards. Parking can be difficult and limited. The building is not ADA compliant and retrofitting is too costly. The current YMCA facility design is operationally challenging and impossible to serve all populations fairly. A new inclusively designed facility is needed to meet the needs of everyone.

That is why we need you!

» THE IMPACT

Together, we have a rare chance to impact our community for generations to come. Your Wenatchee Valley YMCA is expanding to serve more people than ever before. You can take this once-in-a-lifetime opportunity to make a meaningful difference by joining us in strengthening our community.

The new YMCA facility will:

- › Strengthen families by providing functional program for the entire family
- › Increase access to people of all ages and all abilities
- › Meet growing community need for holistic wellness programs
- › Improve and advance health and fitness offerings including serving people with disabilities
- › Allow for stronger partnerships to help serve our community, together

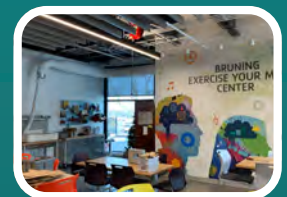
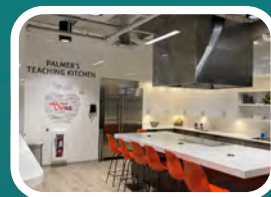
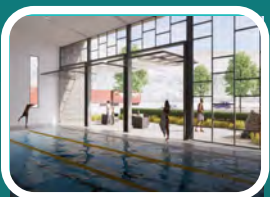


»» THE PLAN

As we build upon our successes, the Wenatchee Valley YMCA is taking steps to ensure a future that will sustain our mission. We are confident that by collaborating and working together, we will answer the call to serve our communities with a better facility that meets more needs.

Outlined below is what we could offer beyond our current facility restrictions:

- Aquatic Center with a family friendly, multipurpose lesson/group exercise pool, lap swimming pool, all with retractable wall(s) for indoor/outdoor options
- Full size gymnasium hosting basketball, pickleball, volleyball, futsal, and more
- Elevated, indoor walking track around a state of the art fitness center
- Universal locker room for young parents with young children and care-givers of special need individuals
- Group exercise rooms to serve various populations simultaneously
- Meeting spaces for members, partners, and community use



We can be a critical hub of human services in our community for years to come.

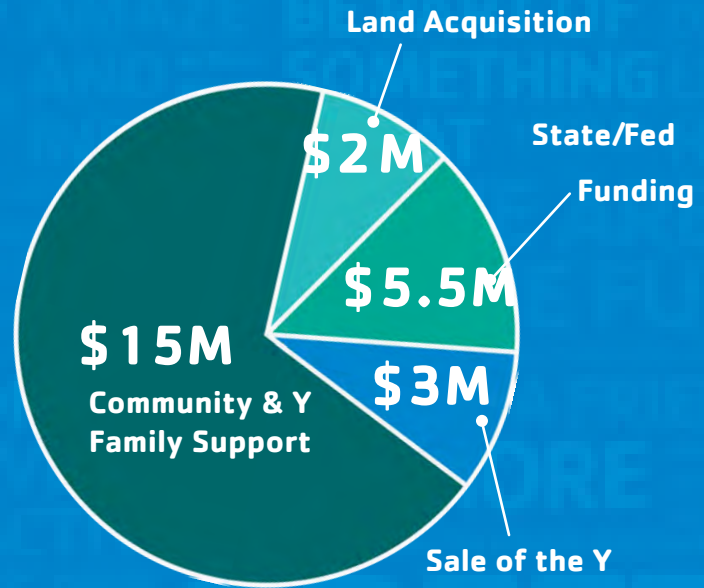
» WE NEED YOUR HELP!

The total cost for the full demolition, renovation, and construction is projected at approximately \$25.4 million. Our strategic advisors have tested and concluded that this audacious goal is achievable.

PROJECTED FUNDING

We are committed to raising resources both from within and beyond Wenatchee Valley through a variety of sources, including government funding, private funding, partnerships, and sales of the existing YMCA.

The level of community support is what drives state funding.
That's where you can help!



» HOW TO GIVE

This is your chance to leave a legacy!

Ways to Give:

- Cash Gifts (In-Person, Mail, Online, Multi-Year Pledge)
- Gifts of Securities & Security Transfers
- Matching Gifts
- Memorials & Tributes
- Bequests, Annuities, & Remainder Trusts

Visit <https://www.wenymca.org/capital-campaign> to learn more or scan the code to the right to give.

Please contact Dorry at the number below or by email at dorry@wenymca.org.

All gifts to Wenatchee Valley YMCA are tax-deductible to the fullest extent of the law.



» BUILDING WHAT MATTERS «

WENATCHEE VALLEY YMCA
217 Orondo Avenue
Wenatchee, WA, 98801
(509) 662-2109